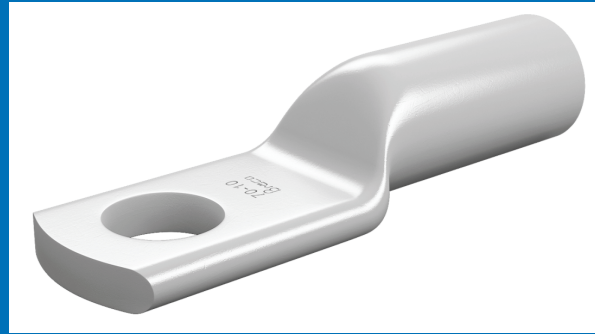


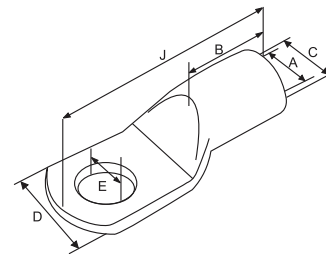
Braco Aluminium Crimping Terminals are manufactured out of tubes of purity equal to or greater than 99.5%, having maximum conductivity not less than 60% IACS and are designed as per IS 8309 1993. These are used for terminating all sizes of cables to terminate electrical switching equipments. The absence of an inspection hole prevents the entry of water or moisture into crimped joints making them suitable for outdoor applications.



ALUMINIUM CRIMPING TERMINALS

Material : Aluminium IS: 5082 :1981

Size Sq. mm	Dimensions						Code No.
	E	A	C	D	B	J	
2.5	3.2	2.0	5.5	7	7	18	AT-151
	3.7	2.6	5.5	7	7	18	AT-309
4	4.2	2.9	5.5	7	7	18	AT-155
	5.2	2.9	5.5	9	7	24	AT-317
6	5.2	3.5	5.5	8	7	24	AT-158
	6.4	3.5	5.5	11	7	24	AT-313
10	6.4	4.4	7.4	11	9	30	AT-214
	8.2	4.4	7.4	13	9	30	AT-215
16	6.4	5.4	8.3	11	13	37	AT-252
	8.2	5.4	8.3	12	13	37	AT-216
	10.2	5.4	8.3	15	13	37	AT-217
25	6.4	7.0	9.7	14	16	44	AT-253
	8.2	7.0	9.7	14	16	44	AT-218
	10.2	7.0	9.7	17	16	44	AT-219
	12.7	7.0	9.7	18	16	44	AT-220
35	6.4	8.0	10.8	15	18	47	AT-254
	8.2	8.0	10.8	15	18	47	AT-221
	10.2	8.0	10.8	17	18	47	AT-222
50	8.2	9.3	13	18	22	54	AT-255
	10.2	9.3	13	18	22	54	AT-312
	12.7	9.3	13	18	22	54	AT-224
70	8.2	11.1	15.4	22	26	60	AT-256
	10.2	11.1	15.4	22	26	60	AT-225
	12.7	11.1	15.4	22	26	60	AT-226



ALUMINIUM CRIMPING TERMINALS

Size Sq. mm	Dimensions						Code No.
	E	A	C	D	B	J	
95	10.2	13.5	17.3	25	28	64	AT-227
	12.7	13.5	17.3	25	28	64	AT-228
	16.2	13.5	17.3	25	28	64	AT-229
120	10.2	14.8	19.6	28	32	73	AT-257
	12.7	14.8	19.6	28	32	73	AT-230
	16.2	14.8	19.6	28	32	73	AT-231
150	10.2	16.6	21.4	31	34	79	AT-258
	12.7	16.6	21.4	31	34	79	AT-232
	16.2	16.6	21.4	31	34	79	AT-233
185	10.2	18.5	24	34	36	84	AT-311
	12.7	18.5	24	34	36	84	AT-234
	16.2	18.5	24	34	36	84	AT-235
225	12.7	20.6	27	39	40	94	AT-320
240	12.7	22	28	40	44	102	AT-236
	16.2	22	28	40	44	102	AT-237
	20.3	22	28	40	44	102	AT-238
300	16.2	24	31	44.7	47	115	AT-300
	20.3	24	31	44.7	47	115	AT-259
400	20.3	26.8	35.5	51	56	130	AT-260
500	20.3	30.2	41	58	60	140	AT-296
630	20.3	35	46	66	69	154	AT-261
800	-	39	51	73	77	180	AT-318
1000	-	43.5	57	81	100	220	AT-319

